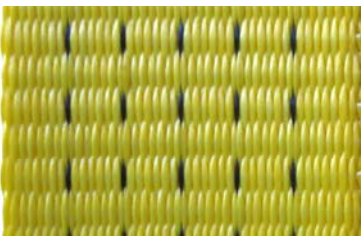


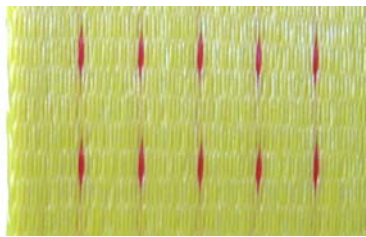


Pay off innovations

SHZ's new DuroLash is an innovative lashing strap with doubled lifetime. The lifetime extension could be achieved by using Koepy® webbing with an extra unruffled surface.



Traditional webbing



Koepy® webbing

Extreme durability

The webbing used for **DuroLash** lashings is achieving a breaking force of 6.000 daN (LC 2000 daN) respectively 7500 daN (LC 2500 daN). In difference to traditional webbing the breaking force of **DuroLash** webbing is nearly constant also under rough conditions. During abrasion test's at SHZ test laboratory **DuroLash**-lashings exhibit also after 2.000 cycles a remaining breaking force of 91%. In similar test's traditional lashings only achieved 40%.

Less wear and tear

The excellent abrasion resistance could be achieved with a new weaving method and ultrasonic finishing of the webbing.

Maximum safety

Weaving of the webbing and fabrication of the DuroLash-lashings only takes place in Germany. The enhanced abrasion resistance of the webbing and the high-quality manufacturing of the lashing guarantees maximum safety over a long time.

Immediately efficiency

Because of the unruffled surface a doubled lifetime until withdrawal from service could be achieved (compared with traditional webbings).

DuroLash – longer lifetime also under rough conditions



■ ■ ■ made in Germany

Characteristics

- slight abrasion
- enhanced durability
- maximum safety
- saving potentials
- enhanced stability









The following calculation shows the possible saving potential:

E.g. annual consumption of an truck company so far 1.000 pieces p.a. per 26,20 €

	Standard	DuroLash	
1. year:	26.200 €	30.100€	+15%
2. year:	26.200 €	nothing	
Amount:	52.400 €	30.100€	-43%

This calculation shows the capability of our new DuroLash-lashings.
Look and see! We could provide detailed information.

DuroLash lashings are available in the following completion:

Art.-no.	Description	
Selection ratchet		
ZD _ _ _ _ _	DuroLash Cargo ; STF 300 daN; 50mm; LC 2000/ 4000 daN	
ZDF _ _ _ _ _	DuroLash Ergo ; STF 500 daN; 50mm; LC 2000/ 4000 daN (Long arm draft ratchet)	
ZDL _ _ _ _ _	DuroLash BSC ; STF 500 daN; 50mm; LC 2000/ 4000 daN (BSC-Long arm push ratchet)	
ZD5 _ _ _ _ _	DuroLash Cargo ; STF 300 daN; 50mm; LC 2500/ 5000 daN	
ZDF5 _ _ _ _ _	DuroLash Ergo ; STF 500 daN; 50mm; LC 2500/ 5000 daN (Long arm draft ratchet)	
ZDL5 _ _ _ _ _	DuroLash BSC ; STF 500 daN; 50mm; LC 2500/ 5000 daN (BSC-Long arm push ratchet)	
Selection hook		
_ _ _ 108		None
_ _ _ 2081		Double J hook
_ _ _ 2082		Claw hook
_ _ _ 2083		Twisted snap hook
_ _ _ 2084		Delta ring
_ _ _ 2085		Triangle hook
_ _ _ 2086		Flat hook
_ _ _ 2089		Triangle wire hook
_ _ _ 20811		Double J hook with securing

Are you interested?

More information under www.shz-gmbh.com or by telephone +49 35952/28292.